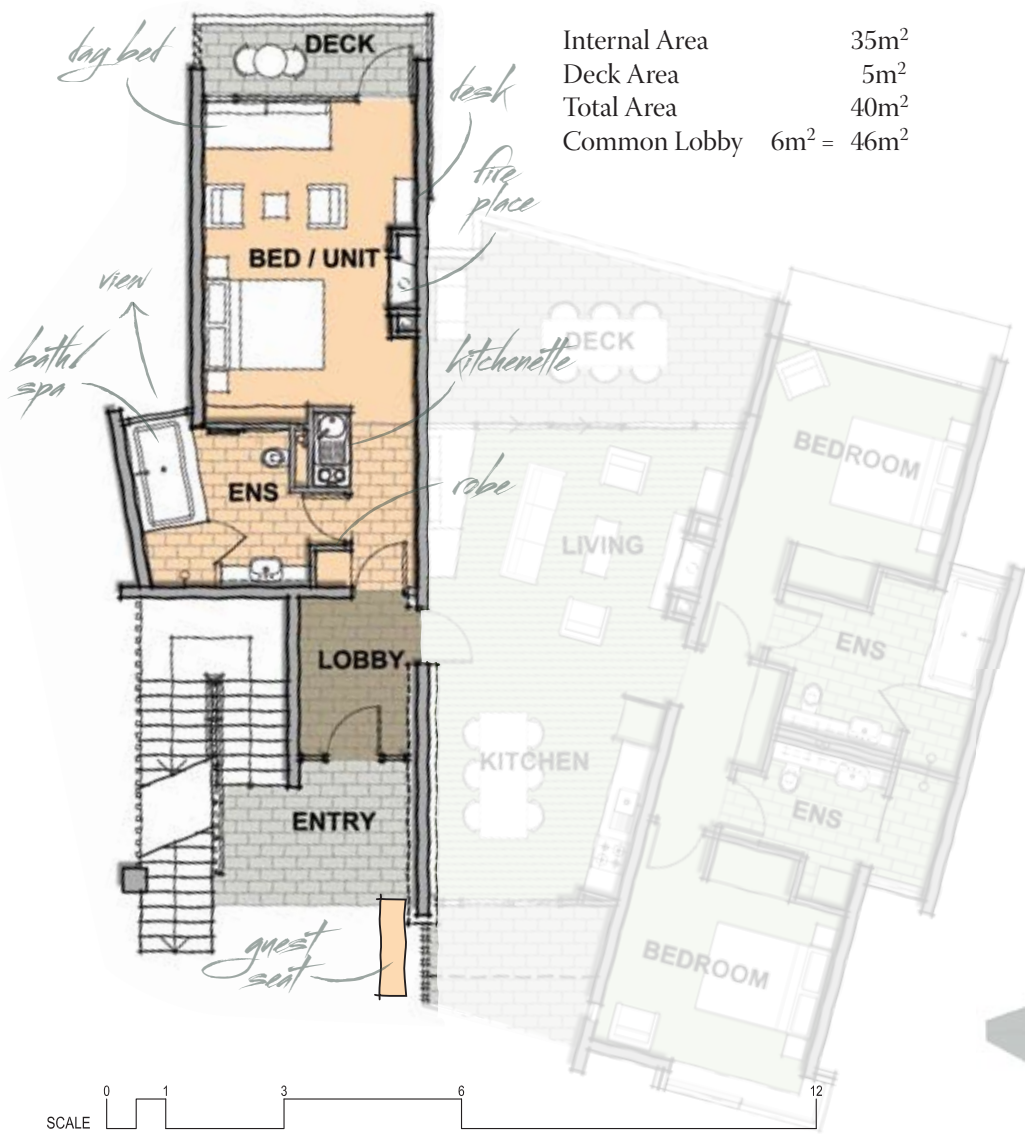
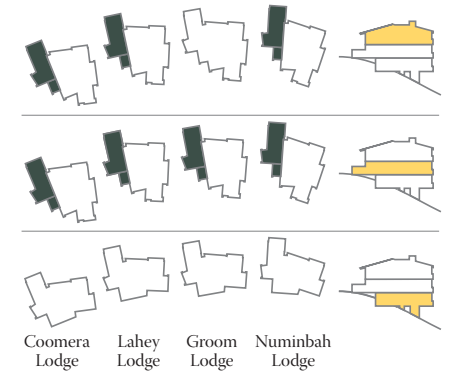


1 Bedroom Suite



Internal Area	35m ²
Deck Area	5m ²
Total Area	40m ²
Common Lobby	6m ² = 46m ²

- Sleeps up to 3 persons
- Gas fireplace with timber surrounds
- Built in desk and book shelves
- HD LCD TV concealed by sliding wooden screens
- Satellite TV reception
- Internet access
- Day bed
- Designer furniture package
- Carpeted bedroom
- Slate tiles in entry, lobby and deck
- Tiled bathroom and walkway
- Spa bath with private views over Numinbah Valley
- Separate glass screened shower with views
- Kitchenette with sink, hotplates, fridge, microwave and kitchen utensils
- 2.7m (9') ceilings at mid level
- Vaulted ceiling at upper levels
- Deck with expansive northern view



Coomera Lodge Lahey Lodge Groom Lodge Numinbah Lodge

Available in Groom Upper and Mid, Lahey Upper, Groom Mid and Numinbah Upper and Mid



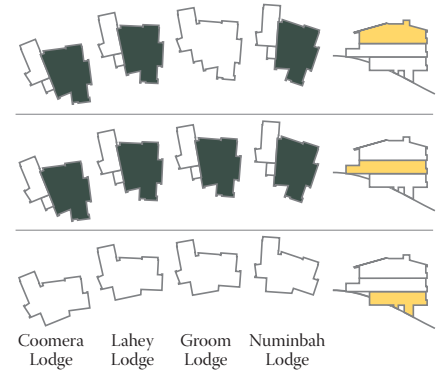
* Floorplans and elevations are indicative and may vary with Authority and/or construction requirements

2 Bedroom Apartment

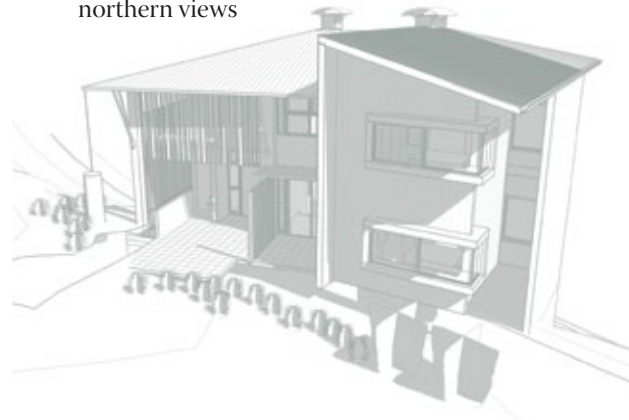
Internal Area 90m²
 Deck Area 16m²
 Total Area 106m²
 Common Lobby 6m² = 112m²
 Plus Courtyard 6m² = 118m²
 (mid level only)



- Sleeps up to 7 persons
- Gas fireplace with timber surrounds
- Vented heat from fireplace to bedrooms
- Built in desk and book shelves
- HD LCD TV concealed by sliding wooden screens
- Satellite TV reception and Internet access
- Day bed and sofa bed/divan
- Feature stone wall
- Designer furniture package
- Fully fitted kitchen integrated with Living area
- Fridge, gas cooktop, convection microwave, dishwasher
- Recycled timber flooring in Living area
- Carpeted bedrooms
- Slate tiles in entry, lobby and deck (and courtyard in middle level)
- Tiled bathrooms
- Spa/bath with private views over Numinbah Valley
- Separate glass screened shower with views
- Laundry in second Bathroom
- 2.7m (9') ceilings at mid level
- Vaulted ceiling in upper level
- Entertainment deck with gas BBQ and expansive northern views



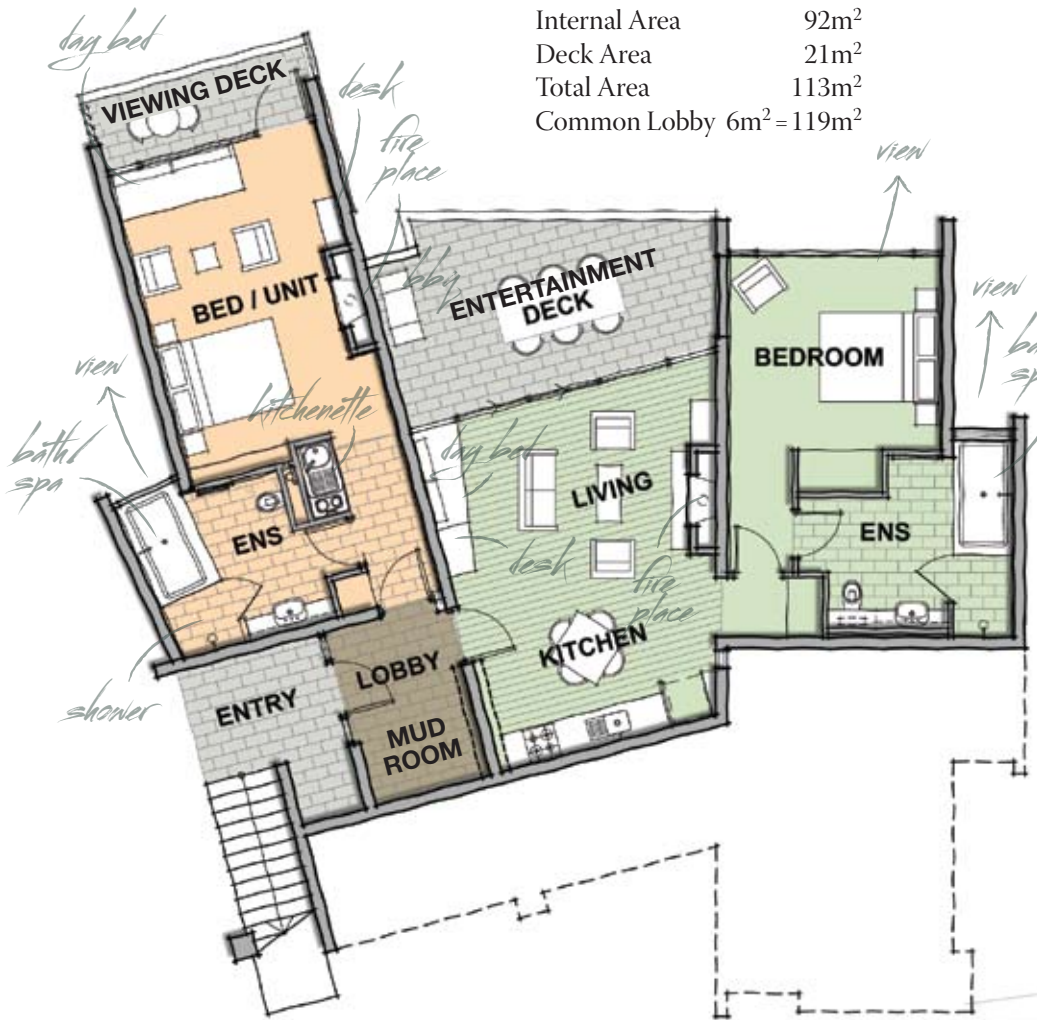
Available in Coomera Upper and Mid, Lahey Upper, Groom Mid and Numinbah Upper and Mid



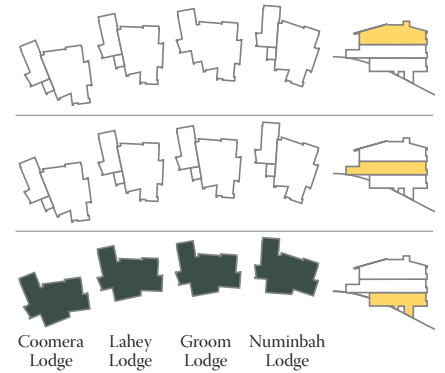
* Floorplans and elevations are indicative and may vary with Authority and/or construction requirements

2 Bedroom Dual Key Apartment

Internal Area 92m²
 Deck Area 21m²
 Total Area 113m²
 Common Lobby 6m² = 119m²



- Sleeps up to 8 persons
- Two Gas fireplaces with timber surrounds
- Vented heat from fireplace to bedrooms
- Built in desks and book shelves
- Two HD LCD TV concealed by sliding wooden screens
- Satellite TV reception and internet access
- Two day beds and sofa bed/divan
- Feature stone wall
- Designer furniture package
- Fully fitted kitchen integrated with Living area
- Fridge, gas cooktop, convection microwave, dishwasher
- Recycled timber flooring in Living area
- Carpeted bedrooms
- Slate tiles in entry, lobby and deck
- Tiled bathrooms
- Bath/spas with private views over Numinbah Valley
- Separate glass screened shower with views
- 2.7m (9') ceilings
- Decks with expansive northern views
- Entertainment deck with gas BBQ



Coomera Lodge Lahey Lodge Groom Lodge Numinbah Lodge

Available in Coomera Ground, Lahey Ground, Groom Ground and Numinbah Ground



* Floorplans and elevations are indicative and may vary with Authority and/or construction requirements

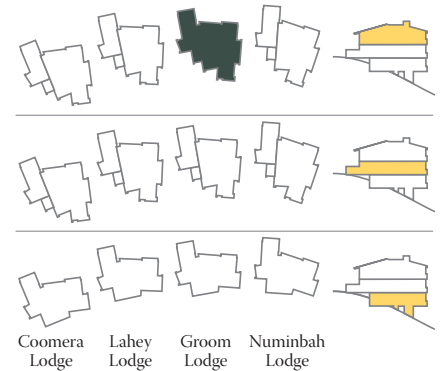


3 Bedroom Dual Key Apartment

Internal Area	125m ²
Deck Area	21m ²
Total Area	146m ²
Common Lobby	6m ² = 152m ²
Plus Courtyard	6m ² = 158m ²
(middle level only)	



- Sleeps up to 10 persons
- Two gas fireplaces with timber surrounds
- Vented heat from fireplace to bedrooms
- Built in desks and book shelves
- Two HD LCD TV concealed by sliding wooden screens
- Satellite TV reception
- Internet access
- Two day beds
- Feature stone wall
- Designer furniture package
- Fully fitted kitchen integrated with Living area
- Fridge, gas cooktop, convection microwave, dishwasher
- Recycled timber flooring in Living area
- Carpeted bedrooms
- Slate tiles in entry, lobby and deck
- Tiled bathrooms
- Bath/spas with private views over Numinbah Valley
- Separate glass screened shower with views
- Laundry in second Bathroom
- 2.7m (9') ceilings in Lahey Lodge
- Vaulted ceiling in Groom Lodge
- Decks with expansive northern views
- Entertainment deck with gas BBQ



Coomera Lodge Lahey Lodge Groom Lodge Numinbah Lodge

Available in Groom Upper and Lahey Mid



* Floorplans and elevations are indicative and may vary with Authority and/or construction requirements