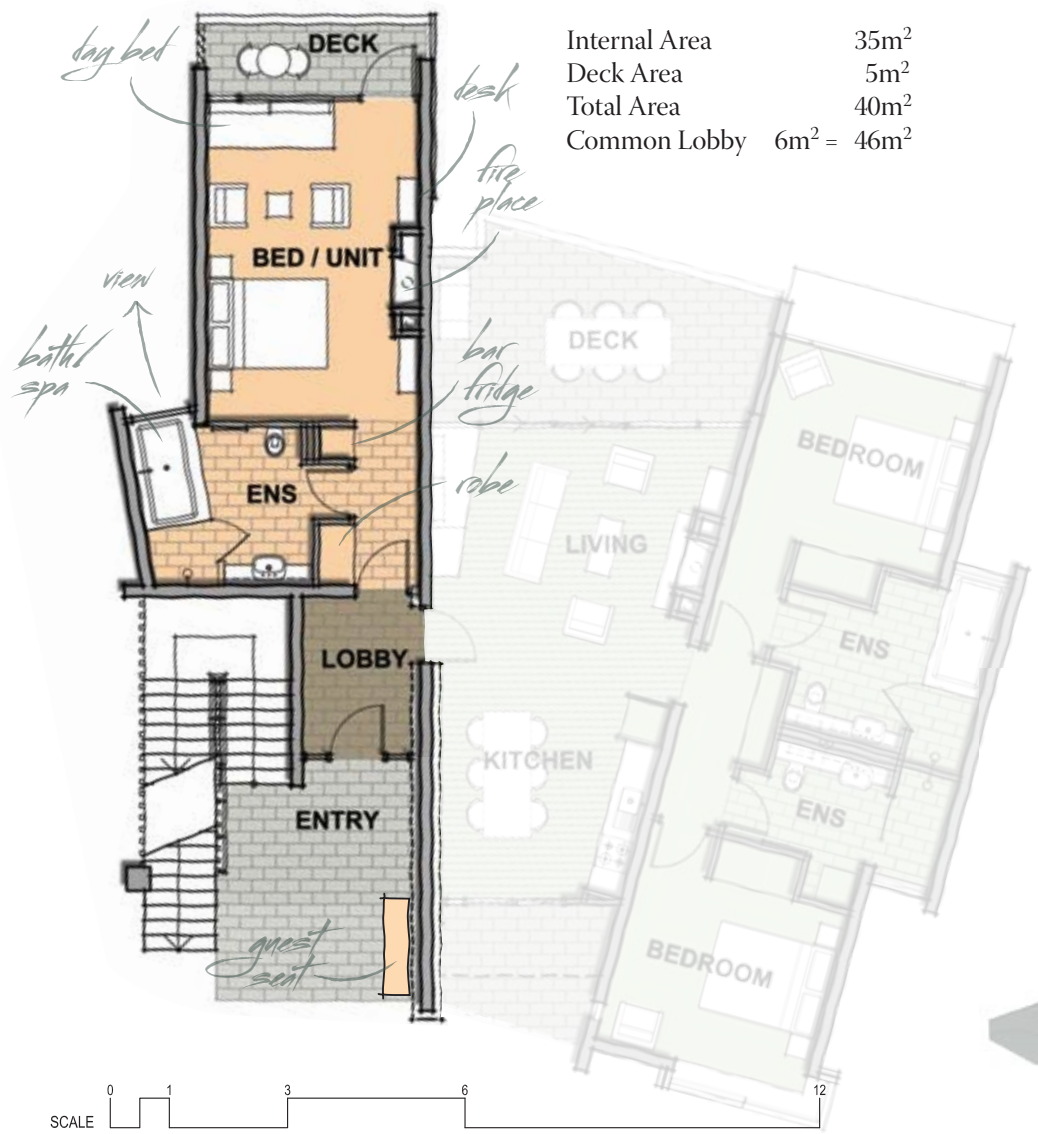
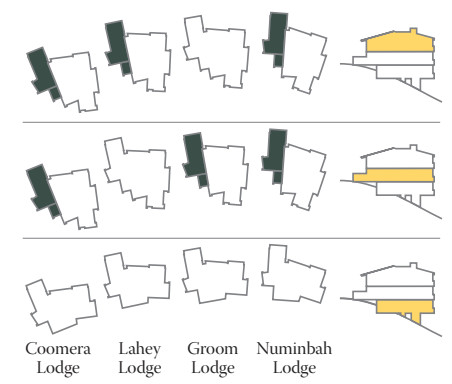


1 Bedroom Suite



Internal Area	35m ²
Deck Area	5m ²
Total Area	40m ²
Common Lobby	6m ² = 46m ²

- Sleeps up to 3 persons
- Gas fireplace with timber surrounds
- Built in desk and book shelves
- HD LCD TV concealed by sliding wooden screens
- Satellite TV reception
- Internet access
- Day bed
- Designer furniture package
- Carpeted bedroom
- Slate tiles in entry, lobby and deck
- Tiled bathroom and walkway
- Spa bath with private views over Numinbah Valley
- Separate glass screened shower with views
- Bar Fridge with Tea/Coffee/Toast facilities
- 2.7m (9') ceilings at mid level
- Vaulted ceiling at upper levels
- Deck with expansive northern view



Available in Groom Upper and Mid, Lahey Upper, Groom Mid and Numinbah Upper and Mid



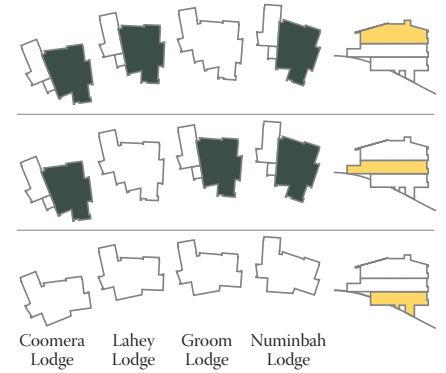
* Floorplans and elevations are indicative and may vary with Authority and/or construction requirements

2 Bedroom Apartment

Internal Area	90m ²
Deck Area	16m ²
Total Area	106m ²
Common Lobby	6m ² = 112m ²
Plus Courtyard	6m ² = 118m ² (mid level only)

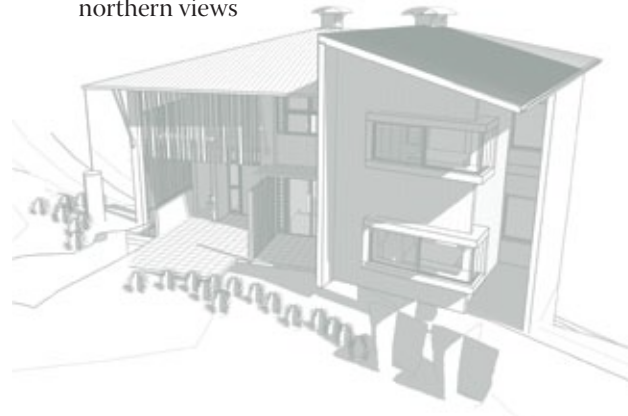


- Sleeps up to 7 persons
- Gas fireplace with timber surrounds
- Vented heat from fireplace to bedrooms
- Built in desk and book shelves
- HD LCD TV concealed by sliding wooden screens
- Satellite TV reception and Internet access
- Day bed and sofa bed/divan
- Feature stone wall
- Designer furniture package
- Fully fitted kitchen integrated with Living area
- Fridge, gas cooktop, convection microwave, dishwasher
- Recycled timber flooring in Living area
- Carpeted bedrooms
- Slate tiles in entry, lobby and deck (and courtyard in middle level)
- Tiled bathrooms
- Spa/bath with private views over Numinbah Valley
- Separate glass screened shower with views
- Laundry in second Bathroom
- 2.7m (9') ceilings at mid level
- Vaulted ceiling in upper level
- Entertainment deck with gas BBQ and expansive northern views



Coomera Lodge Lahey Lodge Groom Lodge Numinbah Lodge

Available in Coomera Upper and Mid, Lahey Upper, Groom Mid and Numinbah Upper and Mid



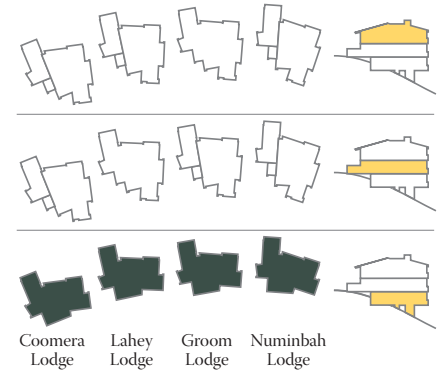
* Floorplans and elevations are indicative and may vary with Authority and/or construction requirements

2 Bedroom Dual Key Apartment

Internal Area 92m²
 Deck Area 21m²
 Total Area 113m²
 Common Lobby 6m² = 119m²



- Sleeps up to 8 persons
- Two Gas fireplaces with timber surrounds
- Vented heat from fireplace to bedrooms
- Built in desks and book shelves
- Two HD LCD TV concealed by sliding wooden screens
- Satellite TV reception and internet access
- Two day beds and sofa bed/divan
- Feature stone wall
- Designer furniture package
- Fully fitted kitchen integrated with Living area
- Fridge, gas cooktop, convection microwave, dishwasher
- Recycled timber flooring in Living area
- Carpeted bedrooms
- Slate tiles in entry, lobby and deck
- Tiled bathrooms
- Bath/spas with private views over Numinbah Valley
- Separate glass screened shower with views
- 2.7m (9') ceilings
- Decks with expansive northern views
- Entertainment deck with gas BBQ



Coomera Lodge Lahey Lodge Groom Lodge Numinbah Lodge

Available in Coomera Ground, Lahey Ground, Groom Ground and Numinbah Ground



* Floorplans and elevations are indicative and may vary with Authority and/or construction requirements

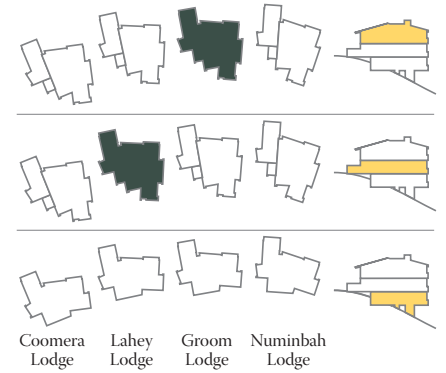


3 Bedroom Dual Key Apartment

Internal Area	125m ²
Deck Area	21m ²
Total Area	146m ²
Common Lobby	6m ² = 152m ²
Plus Courtyard	6m ² = 158m ²
(middle level only)	



- Sleeps up to 10 persons
- Two gas fireplaces with timber surrounds
- Vented heat from fireplace to bedrooms
- Built in desks and book shelves
- Two HD LCD TV concealed by sliding wooden screens
- Satellite TV reception
- Internet access
- Two day beds
- Feature stone wall
- Designer furniture package
- Fully fitted kitchen integrated with Living area
- Fridge, gas cooktop, convection microwave, dishwasher
- Recycled timber flooring in Living area
- Carpeted bedrooms
- Slate tiles in entry, lobby and deck
- Tiled bathrooms
- Bath/spas with private views over Numinbah Valley
- Separate glass screened shower with views
- Laundry in second Bathroom
- 2.7m (9') ceilings in Lahey Lodge
- Vaulted ceiling in Groom Lodge
- Decks with expansive northern views
- Entertainment deck with gas BBQ



Coomera Lodge Lahey Lodge Groom Lodge Numinbah Lodge

Available in Groom Upper and Lahey Mid



* Floorplans and elevations are indicative and may vary with Authority and/or construction requirements