

Green tinge to Lamington National Park project

Paul Donoghue

GREEN investors are being offered a chance to buy into a development of eco-friendly apartments at Lamington National Park.

Construction on the venture, a \$12 million development of four "Sky Lodges" comprising 18 dual-key one, two and three-bedroom apartments, will start this year.

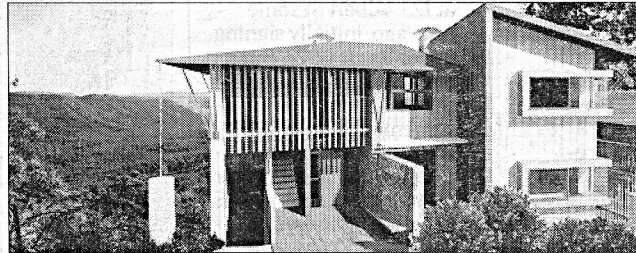
The development is being run through a partnership between Binna Burra Mountain

Lodge and Brisbane-based developer Casleyville.

The apartments – self-contained, fully-furnished 4-5 star retreats – will mix energy efficient design with private luxuries such as fireplaces and spas.

Casleyville director Tim Medhurst said the green initiative was an important aspect of the project, which has tried to reduce its environmental footprint in the national park area.

"We could have covered the



ECO-FRIENDLY: An artist's impression of a Sky Lodge.

whole site in buildings but we've actually gone just the four buildings at three levels

each. Some of the floors are recycled timber floors (and there's a huge underground

water tank that collects (water) and that goes back into the toilet and is used for the garden. Almost every element has some sort of green, eco attachment to it."

The lodges, designed with a modern interior but the classic stone and hardwood style of the existing BBL, are being offered fully furnished for between \$310,000 and \$1.08 million, with seven already sold.

They will be sold with an independent freehold title, but will be managed, operated and

maintained by BBL with the owners receiving an equal, proportional return.

Owners will be able to use the properties rent-free for 28 days a year.

Mr Medhurst said the market had been "crying out" for new accommodation in the area to complement the BBL, which opened three-quarters of a century ago.

The units are currently for sale off the plan, with construction due to start mid year and finishing mid 2011.